

## Case in Point: The Glass Pavilion at The Toledo Museum of Art

Housing one of the world's finest international glass collections, the new Glass Pavilion at The Toledo Museum of Art will be an international marvel of its own. The implementation of a new process in glass design and fabrication, the expertise of an internationally recognized architectural firm and a postmodern design built on the belief of social transparency make the building an architectural and social masterwork.



Glass walls span the entire exterior of the 76,000 square foot structure creating uncharted difficulties in construction.



### The Special Solution

Multiple engineers are retained for various building systems which are designed independently without drawing coordination.

Dunbar's project management process, which includes drawing field work on CAD systems before any construction begins, finds interferences with all mechanical, electrical and structural systems.

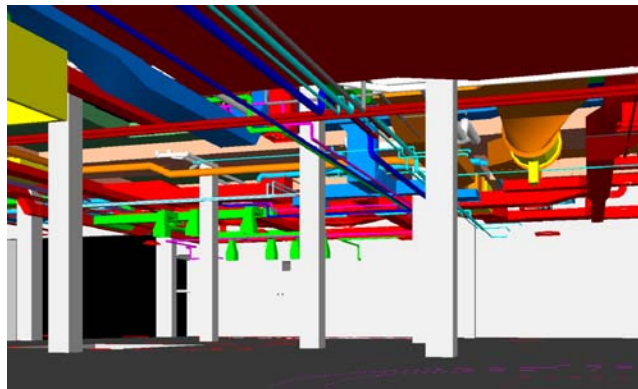
Required elements can't fit in the space available as designed and significant re-routing is presented by Dunbar.

While "only" the mechanical sub, Dunbar provides leadership for all trades and even coordinates the concrete work to ensure total project success.

Project Management

Planning

Scheduling



### Results

**Significant cost overruns are avoided**

*system conflicts are identified and resolved before materials are fabricated*

**Money and time are saved**

*all costs are contained*

**Great digital as-built drawings**

*long-term maintenance will be easier with a complete and accurate digital map of the building systems*